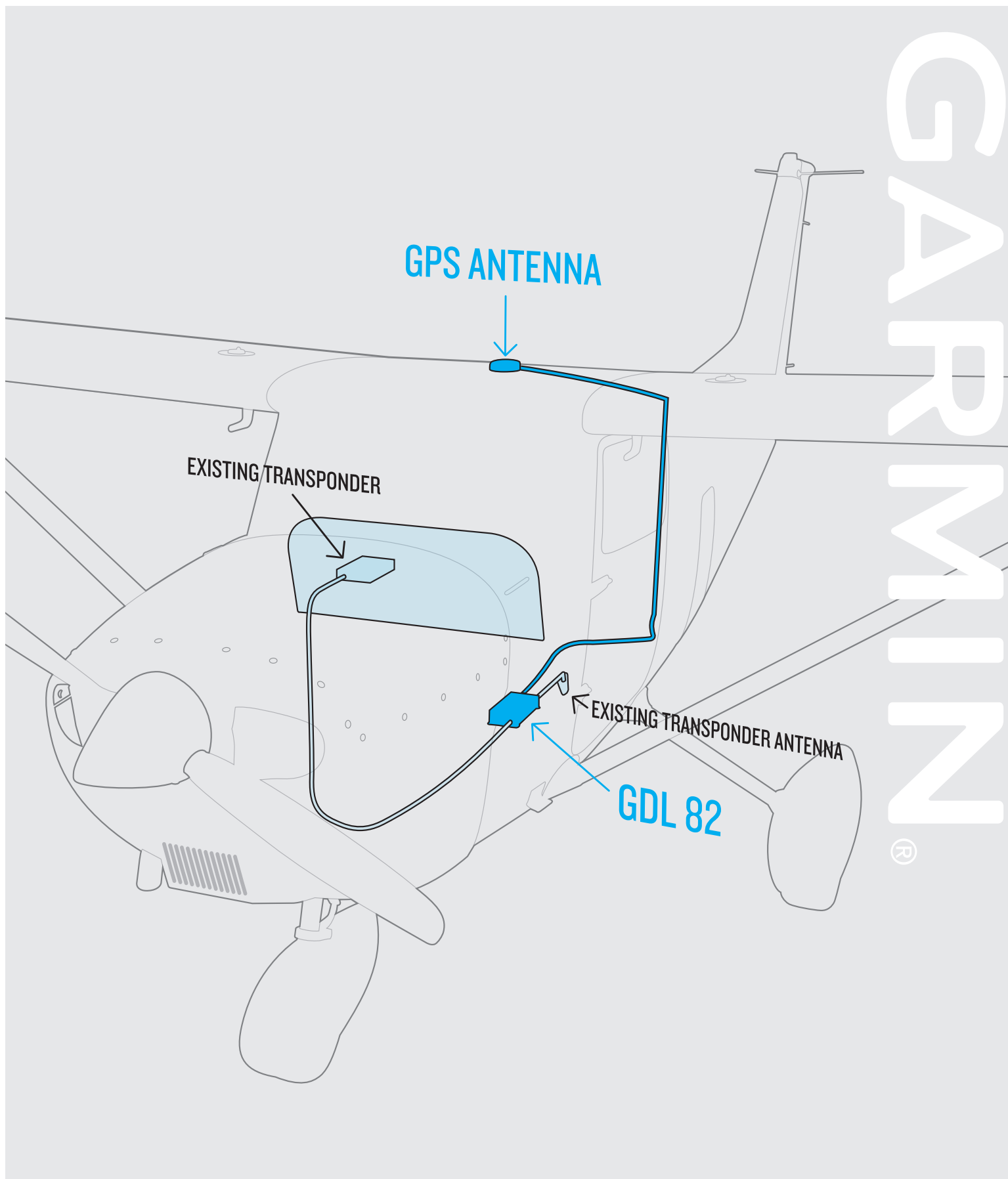


GDL® 82

ADS-B "OUT" HAS NEVER BEEN SO SIMPLE

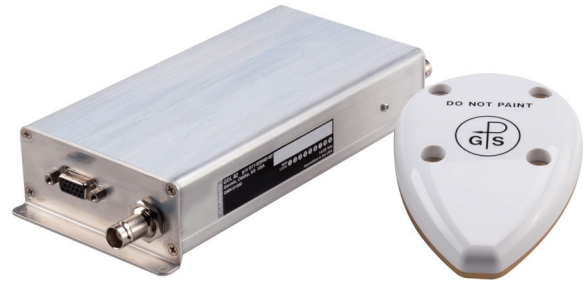


GARMIN®

GDL 82

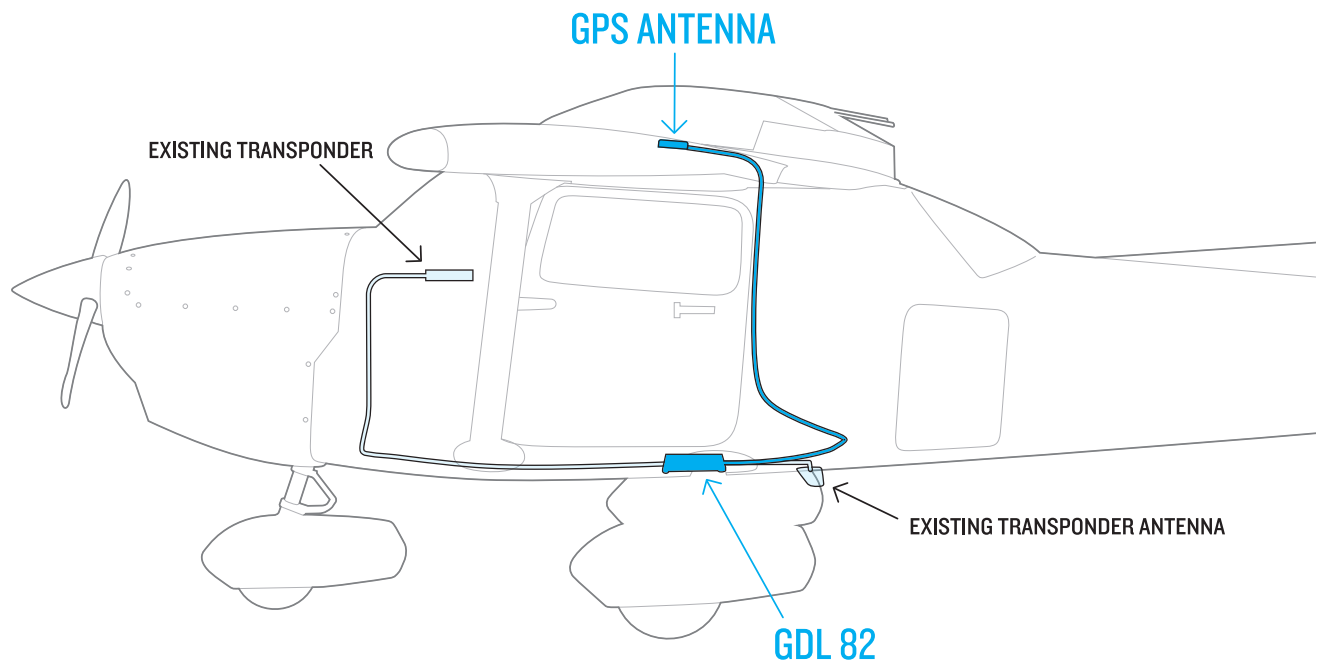
The Garmin GDL 82 is the easy, affordable ADS-B "Out" solution you've been waiting for. Now you can meet minimum FAA requirements with your current transponder and this small, lightweight, nonintrusive design that installs quickly into your airplane with only minimal modifications.

Once installed, the GDL 82 provides a WAAS-enabled position source that provides your precise location to air traffic control and other ADS-B "In" equipped airplanes in your vicinity using the universal access transceiver frequency. And with integrated AutoSquawk technology, it syncs its squawk code to your transponder, so there's no second code to enter, which reduces your workload, and no additional remote control to install in your panel. That means it meets the toughest requirements of all: your budget and your needs.



LESS HASSLE. FASTER INSTALLATION.

- You've never had a smarter ADS-B "Out" solution. Completely installed, the GDL 82 is a low-cost way to meet ADS-B requirements for aircraft flying below 18,000 feet. The GDL 82 is ready to install in hundreds of certificated fixed-wing aircraft models using an FAA-approved STC and memorandum addressing ADS-B installation, and installation is easy — the GDL 82 fits inline between your existing transponder and transponder antenna. And if you don't already have a GPS antenna installed, one is included for installation.
- From there the GDL 82 is the perfect complement to Garmin GDL 39 series or Stratus portable ADS-B "In" receivers, without replacing your transponder or adding another transponder antenna. And with ADS-B "Out," the FAA provides traffic to your aircraft from ADS-B ground stations, providing you the most comprehensive display of ADS-B traffic available. In addition, it offers an optional anonymous mode, which masks your aircraft ID from ADS-B "In" equipment when your aircraft is squawking VFR (1200). With the GDL 82, you can fly confidently — to 2020 and beyond.



GARMIN INTERNATIONAL, INC.

1200 East 151st Street, Olathe, KS 66062
p: 866.739.5687 f: 913.397.8282

GARMIN (EUROPE) LTD.

Liberty House, Hounslow Business Park,
Southampton, Hampshire, SO40 9LR, U.K.
p: +44 (0)87.0850.1243 f: +44 (0)23.8052.4004

GARMIN SINGAPORE PTE. LTD.

46 East Coast Road #05-06, Singapore 428766
p: 65.63480378 f: 65.63480278
e: avionics.asia@garmin.com

Garmin.com/aviation